

Studio Theatre



Welcome

The Building

The Platform Auditorium is part of The Bridge site in Easterhouse. The Bridge is a cultural campus featuring Glasgow Kelvin College, The Easterhouse Library, Easterhouse Swimming Pool & The Platform venues.

The hours between which we have access to the building are:

Monday → Friday: 9am to 9pm
Saturday & Sunday: 10:00am-5:30pm
Hours vary on Bank Holidays

The Bridge building is managed by Glasgow Life meaning we are normally dictated by their opening and staffing hours. Additional time in the building may be possible but this must be negotiated in advance, please contact the venue to discuss.

The Space

Our Studio Theatre is an 11m by 10m space with a sprung laminate floor. There is also a changing corridor measuring approximately 1.5m by 11m which runs parallel to the space and is equipped with coat hooks and lockers.

Capacities

| Theatre | Banquet | Cabaret | Reception | Classroom | Board Room |
|---------|---------|---------|-----------|-----------|------------|
| 100 | 0 | 50 | 150 | 70 | 50 |

Contact

Chris Neary
Lead Technician

chris@platform-online.co.uk
0141 276 9686

Audio

- 1 x Yamaha EMX312sc 8 Channel Powered Mixer
- 2 x S112Y Loudspeakers - Mounted on Tripod Stands
- 1 x Phone to Mini Jack iPod Cable

Depending on other events in the building, we may have other items of Audio equipment available, please contact the venue for more information.

Contact

Chris Neary
Lead Technician

chris@platform-online.co.uk
0141 276 9686

Lighting

- 1 x ETC Express Lighting Desk
- 20 x Small Fresnel - Various Makes between 500W and 650W
- 4 x Acclaim Profiles
- 18 Channels of Dimming Running 24 Outputs
- We have installed cable runs carrying 24 15amp outputs from the dimmer racks to 4 x 6 Way Boxes mounted in the ceiling.
- We have a range of gels available, please contact use for more details.

Depending on other events in the building, we may have other items of Lighting equipment available, please contact the venue for more information.

Video

- 1 x Sanyo Pro Xtra - Available on request, additional charges may apply. This unit projects onto a white wall in the space and we ask you bear this in mind when designing your room layout. (Please see room plan for details)

Contact

Chris Neary
Lead Technician

chris@platform-online.co.uk
0141 276 9686

Staging

- 10 x 4ft by 4ft decks - This can be built in any configuration with a stage height of 30cm.

Power

- 1 x 32amp Single Phase Supply (located in storage cupboard)
- 1 x 63amp Single Phase Supply (located in storage cupboard)

Drapping

We have a curtain track running around the edge of the studio theatre. This track contains the following drapes.

- 4 x 4.5m long black curtains
- 1 x 7m long white gauze curtain

We also have four custom made flats which we use to cover the large windows in order to blackout the space.

Contact

Chris Neary
Lead Technician

chris@platform-online.co.uk
0141 276 9686

Room Layout

Please refer to the plan on the next page for more details but the makeup of each wall in the space is as follows:

- White Wall - This is the wall we use for projection. This wall is also fitted with a ballet bar.
- Windows - These are full height floor to ceiling windows. We have custom flats to cover these when needed.
- Mirrors - This wall is covered in mirrors for its full length up to a height of approximately 8ft.
- Moving Wall - We are able to retract this wall to combine the café and studio theatre into one large space. Please contact us if you are interested in using this feature.

Venue Details

Load In

- Event in this space are required to load in through the main entrances. These both have step free access.
- We have a large car park with free parking throughout the day.

Internet

- Wireless internet is available throughout the venue.
- This is a shared network meaning bandwidth and speeds cannot be guaranteed.

Dressing Rooms

- Please contact the venue if you require dressing room or changing facilities.

Laundry

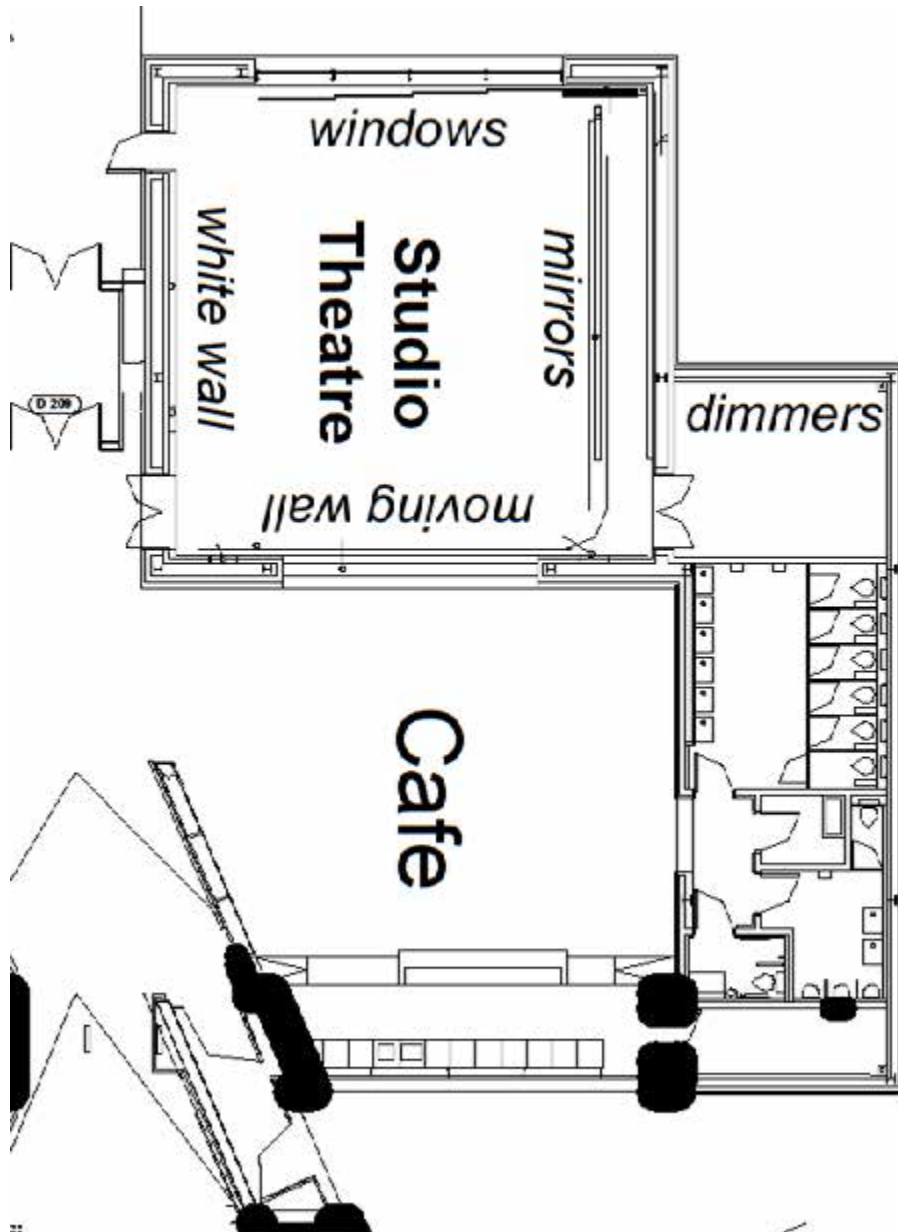
- Two large washing machines and two industrial dryers are available on request.
- Irons and ironing boards can also be arranged on request.

Contact

Chris Neary
Lead Technician

chris@platform-online.co.uk
0141 276 9686

Venue Details

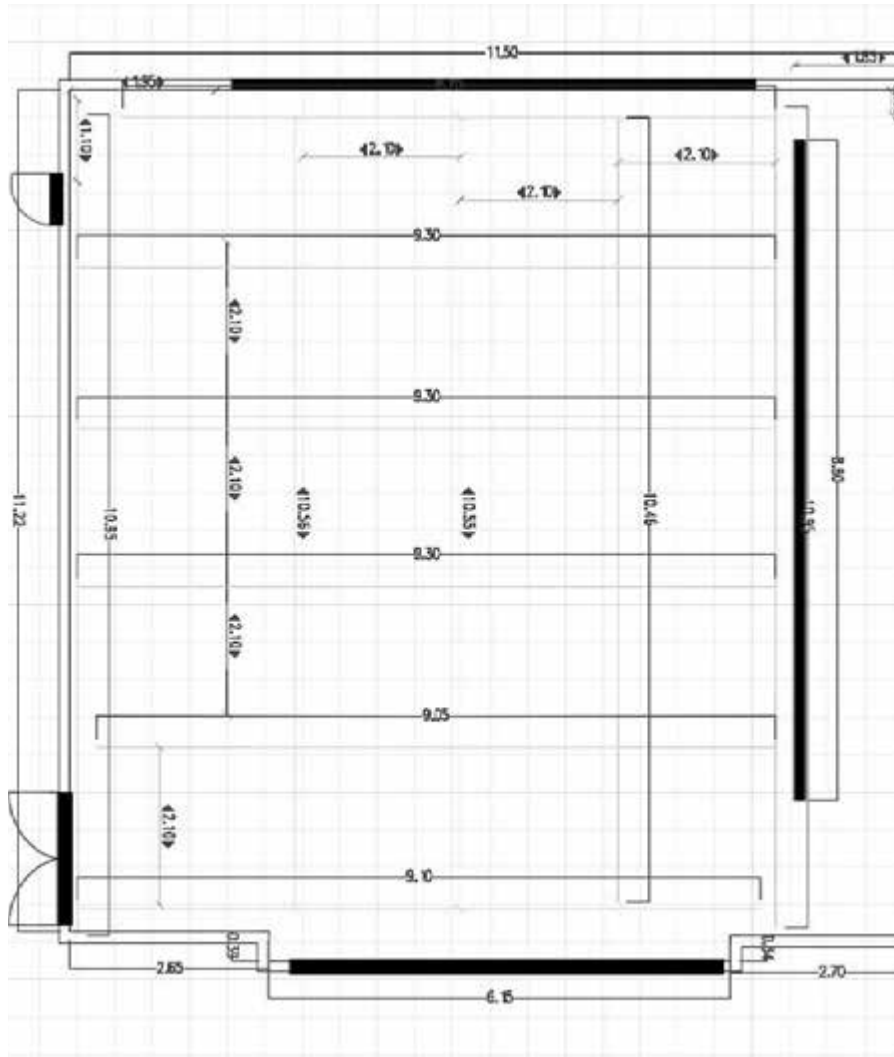


Contact

Chris Neary
Lead Technician

chris@platform-online.co.uk
0141 276 9686

Venue Details



Contact

Chris Neary
Lead Technician

chris@platform-online.co.uk
0141 276 9686